



The Sizewell C Project

9.11 Responses to the ExA's First Written Questions (ExQ1) Volume 2 - Figures Part 6 of 7

Revision: 1.0

Applicable Regulation: Regulation 5(2)(o)

PINS Reference Number: EN010012

June 2021

Planning Act 2008
Infrastructure Planning (Applications: Prescribed
Forms and Procedure) Regulations 2009



CONTENTS

PART 1 OF 7

Chapter 2

- Figure 2.1 Main Development Site Boundary and Nominated Site Area for Sizewell C from NPS EN-6
- Figure 2.2 Main Development Site Main Platform Proposed General Arrangement and Nominated Site Area for Sizewell C from NPS EN-6
- Figure 2.3 Main Development Site showing the lines of Easting and Northing
- Figure 2.4 County, District, Town and Parish Councils that have made Relevant Representations
- Figure 2.5 Main Development Site Typical General Arrangement (SZC Construction)
- Figure 2.6 Main Development Site Cut Off Wall Extent, Excavation Levels and Marine Tunnelling Shafts Sheet 1 of 3
- Figure 2.7 Main Development Site Cut Off Wall Extent, Excavation Levels and Marine Tunnelling Shafts Sheet 2 of 3
- Figure 2.8 Main Development Site Cut Off Wall Extent, Excavation Levels and Marine Tunnelling Shafts Sheet 3 of 3
- Figure 2.9 Land East of Eastlands Industrial Estate Site Layout

Chapter 5

- Figure 5.1 Indicative sketch of how a potential link could be provided to link the two village bypass to a future four-village bypass

-
- Figure 5.2 A12 Four village route options (A12 Four Villages Study 2006) with the proposed Two Village Bypass route
- Figure 5.3 A12 Four Villages route options (A12 Four Villages Study 2014) with the proposed Two Village Bypass route
- Figure 5.4 A12 SEGWay Strategic Case 2017 route options with the proposed Two Village Bypass route

PART 2 OF 7

Chapter 15

- Figure 15.1 Foul water overview

Chapter 17

- Figure 17.1 Response to First Written Questions - HE 1.1
- Figure 17.2 Response to First Written Questions - HE 1.1 and HE 1.27
- Figure 17.3 Marine Historic Environment Study Area - Figure 23.1 Update
- Figure 17.4 Non-designated Heritage Records – Figure 23.2 Update
- Figure 17.5 Distribution of Deposits with High Palaeoenvironmental Potential – Figure 23.3 Update

PART 3 OF 7

Chapter 18

- Figure 18.1 Representative Viewpoints: Operational Phase Parameters Based Photowire. Key
- Figure 18.2 Representative Viewpoints: Operational Phase Parameters Based Photowire. Viewpoint 5: Footpath South of Leiston Abbey
- Figure 18.3 Representative Viewpoints: Operational Phase Parameters Based Photowire. Viewpoint 6: Suffolk Coast Path East of Goose Hill

NOT PROTECTIVELY MARKED

-
- | | |
|--------------|--|
| Figure 18.4 | Representative Viewpoints: Operational Phase Parameters Based Photowire. Viewpoint 8: Footpath North of Leiston Abbey |
| Figure 18.5 | Representative Viewpoints: Operational Phase Parameters Based Photowire. Viewpoint 9: Sizewell Gap South of Greater Gabbard Sub-Station |
| Figure 18.6 | Representative Viewpoints: Operational Phase Photowire - Year 1. Viewpoint 9: Sizewell Gap South of Greater Gabbard Sub-Station |
| Figure 18.7 | Representative Viewpoints: Operational Phase Photowire - Year 15. Viewpoint 9: Sizewell Gap South of Greater Gabbard Sub-Station |
| Figure 18.8 | Representative Viewpoints: Operational Phase Parameters Based Photowire. Viewpoint 10: Suffolk Coast Path and Sandlings Walk East of Hill Wood |
| Figure 18.9 | Representative Viewpoints: Operational Phase Photowire - Year 1. Viewpoint 10: Suffolk Coast Path and Sandlings Walk East of Hill Wood |
| Figure 18.10 | Representative Viewpoints: Operational Phase Photowire - Year 15. Viewpoint 10: Suffolk Coast Path and Sandlings Walk East of Hill Wood |
| Figure 18.11 | Representative Viewpoints: Operational Phase Parameters Based Photowire. Viewpoint 14: Suffolk Coast Path at Minsmere Sluice |
| Figure 18.12 | Representative Viewpoints: Operational Phase Parameters Based Photowire. Viewpoint 17: National Trust Dunwich Coastguard Cottages Car Park |
| Figure 18.13 | Representative Viewpoints: Operational Phase Parameters Based Photowire. Viewpoint 26: 1800m Directly East of Sizewell Power Stations |
| Figure 18.14 | Representative Viewpoints: Operational Phase Photowire - Year 1. Viewpoint 26: 1800m Directly East of Sizewell Power Stations |
-

Figure 18.15 Representative Viewpoints: Operational Phase Photowire - Year 15.
Viewpoint 26: 1800m Directly East of Sizewell Power Stations

PART 4 OF 7

- Figure 18.16 Example photographs of the finish and appearance of plinth -
Terminal 2B building at Heathrow airport
- Figure 18.17 New Bridleway Link: Landscape Retention
- Figure 18.18 New Bridleway Link: Site Clearance
- Figure 18.19 New Bridleway Link: Landscape Proposals
- Figure 18.20 Visibility of Change to Height of Operational Parameter P5
- Figure 18.21 Freight Management Facility. Representative Viewpoint 1: Existing
View
- Figure 18.22 Freight Management Facility. Representative Viewpoint 1: Photowire
- Year 1
- Figure 18.23 Freight Management Facility. Representative Viewpoint 1: Photowire
- Year 10
- Figure 18.24 Sizewell Link Road oLEMP Plate 4.1. Proposed oLEMP Habitat
Typology – Overview
- Figure 18.25 Sizewell Link Road oLEMP Plate 4.2. Proposed oLEMP Habitat
Typology – Area 1
- Figure 18.26 Sizewell Link Road oLEMP Plate 4.3. Proposed oLEMP Habitat
Typology – Area 2
- Figure 18.27 Sizewell Link Road oLEMP Plate 4.4. Proposed oLEMP Habitat
Typology – Area 3
- Figure 18.28 Sizewell Link Road oLEMP Plate 4.5. Proposed oLEMP Habitat
Typology – Area 4

- Figure 18.29 Sizewell Link Road oLEMP Plate 4.6. Proposed oLEMP Habitat Typology – Area 5
- Figure 18.30 Sizewell Link Road oLEMP Plate 4.7. Proposed oLEMP Habitat Typology – Area 6
- Figure 18.31 Sizewell Link Road oLEMP. Woodland Planting East of The East Suffolk Line
- Figure 18.32 Sizewell Link Road. Representative Viewpoint 2: Existing View
- Figure 18.33 Sizewell Link Road. Representative Viewpoint 2: Photowire

PART 5 OF 7

- Figure 18.34 Sizewell Link Road. Representative Viewpoint 3: Existing View
- Figure 18.35 Sizewell Link Road. Representative Viewpoint 3: Photowire
- Figure 18.36 Sizewell Link Road. Representative Viewpoint 6: Existing View
- Figure 18.37 Sizewell Link Road. Representative Viewpoint 6: Photowire
- Figure 18.38 Sizewell Link Road. Representative Viewpoint 7: Existing View
- Figure 18.39 Sizewell Link Road. Representative Viewpoint 7: Photowire
- Figure 18.40 Sizewell Link Road. Representative Viewpoint 8: Existing View
- Figure 18.41 Sizewell Link Road. Representative Viewpoint 8: Photowire
- Figure 18.42 Illustrative Visual of Proposed Pretty Road Overbridge

PART 6 OF 7 (THIS PART)

- Figure 18.43 Two Village Bypass oLEMP Plate 4.1. Proposed oLEMP Figure Habitat Typology
- Figure 18.44 Two Village Bypass oLEMP. Woodland Corridors and Linkages

Figure 18.45	Figure 18.46: Two Village Bypass. Representative Viewpoint 1: Existing View
Figure 18.46	Two Village Bypass. Representative Viewpoint 1: Photowire
Figure 18.47	Two Village Bypass. Representative Viewpoint 6: Existing View
Figure 18.48	Two Village Bypass. Representative Viewpoint 6: Photowire
Figure 18.49	Two Village Bypass. Representative Viewpoint 7: Existing View
Figure 18.50	Two Village Bypass. Representative Viewpoint 7: Photowire
Figure 18.51	Southern Park and Ride. Representative Viewpoint 9: Photograph Panel
Figure 18.52	Southern Park and Ride. Representative Viewpoint 10: Photograph Panel
Figure 18.53	Green Rail Route. Representative Viewpoint 5: Existing View
Figure 18.54	Green Rail Route. Representative Viewpoint 5: Photowire
Figure 18.55	Proposed Location for Ballast Stockpiling

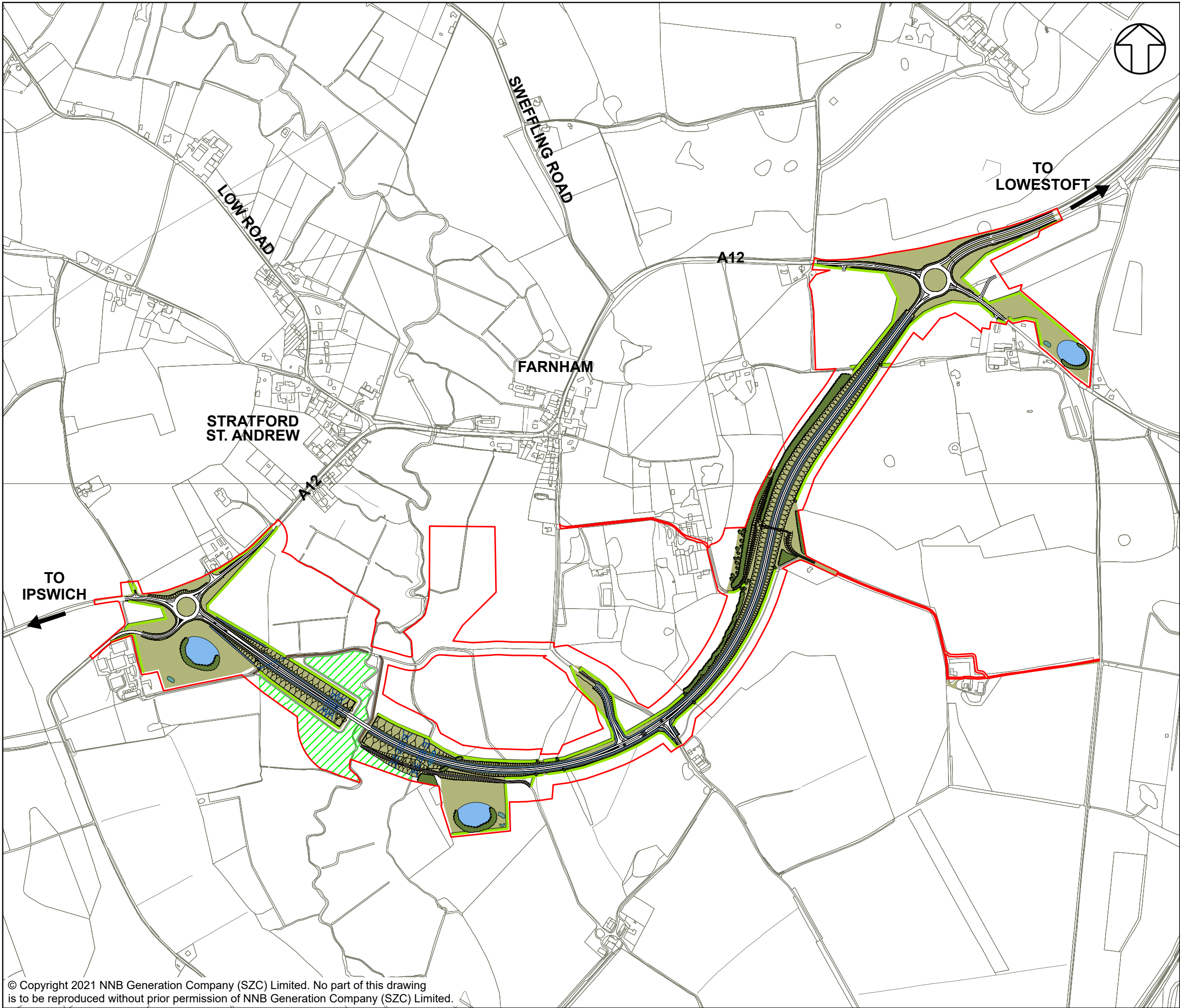
PART 7 OF 7

Chapter 21

Figure 21.1	Landscape and Visual Receptor Groups within the Yoxford Community Area
-------------	--

Chapter 24

Figure 24.1	Movement Framework Phase 1
Figure 24.2	Movement Framework Phase 2-5
Figure 24.3	Movement Framework Operational



NOTES

KEY

- TWO VILLAGE BYPASS DEVELOPMENT
- SITE BOUNDARY
- BROADLEAVED WOODLAND
- SCATTERED TREES
- NATIVE HEDGEROW
- GRASSLAND
- INDICATIVE POND
- INDICATIVE ATTENUATION BASIN
- INDICATIVE SWALE
- INDICATIVE FLOODPLAIN GRASSLAND
- MITIGATION AREA

NOT PROTECTIVELY MARKED

COPYRIGHT
Reproduced from Ordnance Survey map with the permission of Ordnance Survey on behalf of the controller of Her Majesty's Stationery Office © Crown Copyright (2021). All Rights reserved. NNB GenCo 0100060408.
Esri, DigitalGlobe, GeoEye, Earthstar Geographics, CNES/Airbus DS, USDA, USGS, AeroGRID, IGN, and the GIS User Community.
PROW data sourced from Suffolk CC on 27/02/2019 under OGL v3.0 are an interpretation of the Definitive Map and Statement, not the Definitive Map itself, and should not be relied on for determining the position or alignment of any public right of way. The data contains Ordnance Survey data © Crown copyright and database right 2019.



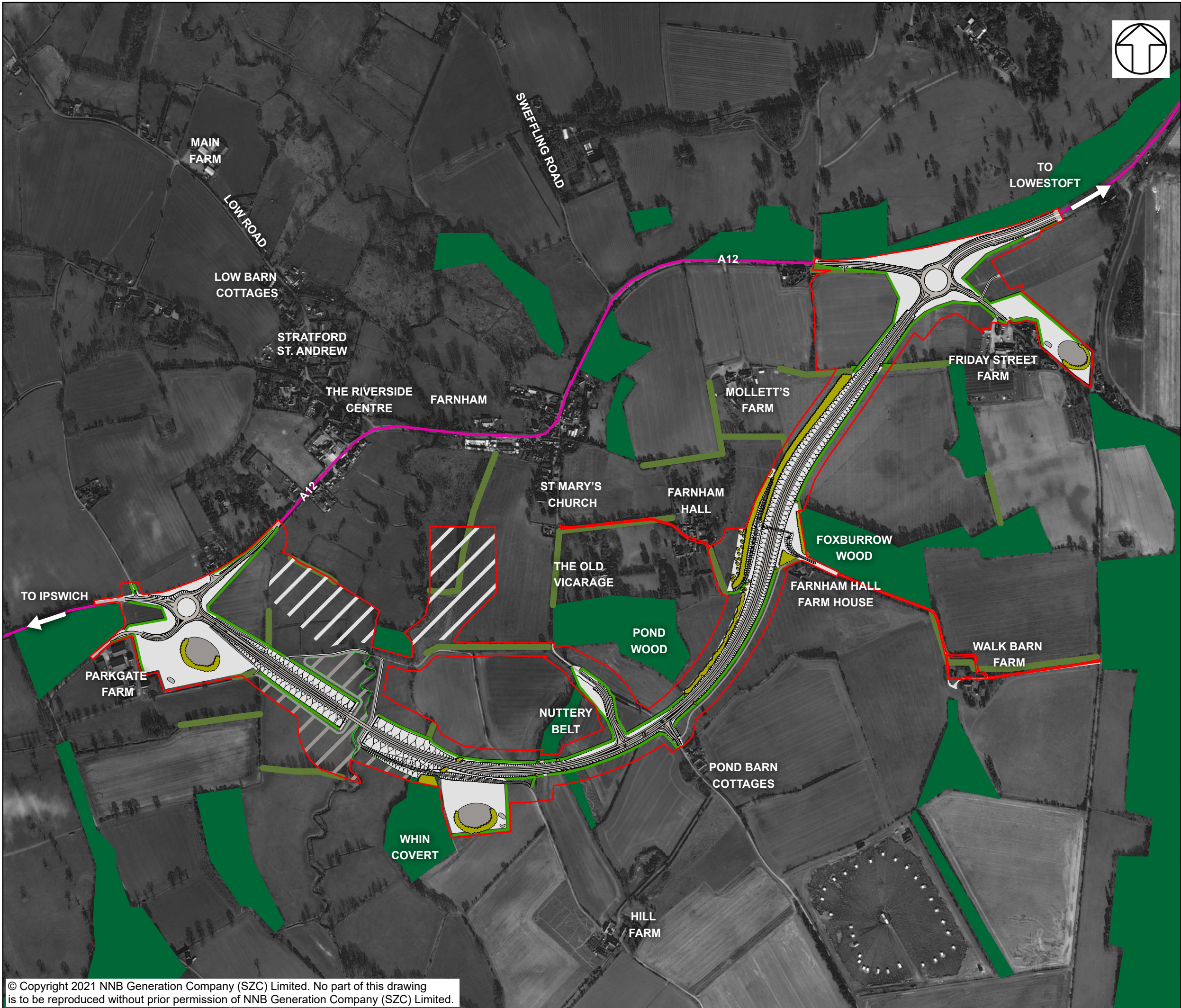
DOCUMENT:
SIZEWELL C PROJECT
RESPONSES TO EXAMINING AUTHORITY'S
WRITTEN QUESTIONS ISSUED 21ST APRIL 2021
CHAPTER 18: LANDSCAPE IMPACT, VISUAL
EFFECTS AND DESIGN

DRAWING TITLE:
TWO VILLAGE BYPASS OUTLINE LANDSCAPE AND
ECOLOGY MANAGEMENT PLAN
PLATE 4.1 - PROPOSED OLEMP HABITAT
TYPOLOGY

DRAWING NO:
FIGURE 18.43

DATE: JUNE 2021 **DRAWN:** V.W. **SCALE:** 1:25,000 @A3

SCALE BAR
0 0.2 0.4 0.6 0.8 1 KM



NOTES

FOR DETAILS OF PERMANENT AND TEMPORARY POSSESSION WITHIN ORDER LIMITS REFER TO LAND PLANS

KEY

- TWO VILLAGE BYPASS DEVELOPMENT SITE BOUNDARY
- EXISTING RETAINED WOODLAND WITHIN AND AROUND SITE BOUNDARY
- EXISTING RETAINED TREE BELTS WITHIN AND AROUND SITE BOUNDARY
- PROPOSED PLANTING
- PROPOSED HEDGEROW
- EXISTING A12

NOT PROTECTIVELY MARKED

COPYRIGHT

Reproduced from Ordnance Survey map with the permission of Ordnance Survey on behalf of the controller of Her Majesty's Stationary Office © Crown Copyright (2021). All Rights reserved. NNB GenCo 0100060408.
Esri, DigitalGlobe, GeoEye, Earthstar Geographics, CNES/Airbus DS, USDA, USGS, AeroGRID, IGN, and the GIS User Community.
PROW data sourced from Suffolk CC on 27/02/2019 under OGL v3.0 are an interpretation of the Definitive Map and Statement, not the Definitive Map itself, and should not be relied on for determining the position or alignment of any public right of way. The data contains Ordnance Survey data © Crown copyright and database right 2019.

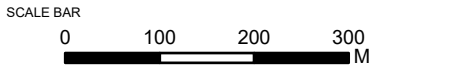


DOCUMENT:
SIZEWELL C PROJECT
RESPONSES TO EXAMINING AUTHORITY'S
WRITTEN QUESTIONS ISSUED 21ST APRIL 2021
CHAPTER 18: LANDSCAPE IMPACT, VISUAL
EFFECTS AND DESIGN

DRAWING TITLE:
TWO VILLAGE BYPASS
WOODLAND CORRIDORS AND LINKAGES

DRAWING NO:
FIGURE 18.44

DATE: JUNE 2021 **DRAWN:** R.K. **SCALE:** 1:8,000 @A3

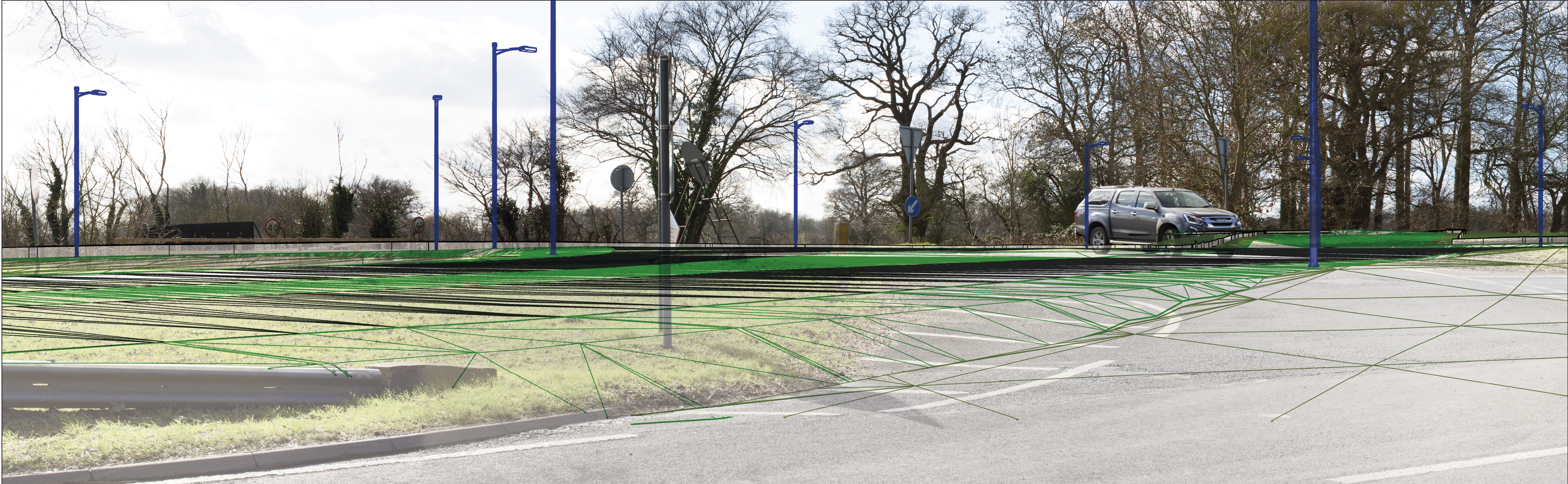




© Copyright 2020 NNB Generation Company (SZC) Limited. No part of this drawing is to be reproduced without prior permission of NNB Generation Company (SZC) Limited.

View flat at a comfortable arm's length

CAMERA LOCATION (OS GRID REFERENCE): 637179 E 260544 N		HORIZONTAL FIELD OF VIEW: 53.5° (PLANAR PROJECTION) PAPER SIZE: 841MM X 297MM (HALF A1) ENLARGEMENT FACTOR: TBC VISUALISATION TYPE: TYPE 3	PHOTO DATE / TIME: 07/03/2019 11:50		NO DIMENSIONS ARE TO BE SCALED FROM THIS DRAWING, ALL DIMENSIONS ARE TO BE CHECKED ON SITE. AREA MEASUREMENTS FOR INDICATIVE PURPOSES ONLY.			COPYRIGHT Reproduced from Ordnance Survey map with the permission of Ordnance Survey on behalf of the controller of Her Majesty's Stationery Office © Crown Copyright (2019). All Rights reserved. NNB GenCo 0100060408.	DOCUMENT: SIZEWELL C PROJECT RESPONSES TO EXAMINING AUTHORITY'S WRITTEN QUESTIONS ISSUED 21ST APRIL 2021 CHAPTER 18: LANDSCAPE IMPACT, VISUAL EFFECTS AND DESIGN	DRAWING TITLE: TWO VILLAGE BYPASS REPRESENTATIVE VIEWPOINT 1: EXISTING VIEW	NOT PROTECTIVELY MARKED		
GROUND LEVEL (MAOD): 16M			CAMERA MODEL AND SENSOR FORMAT: CANON EOS 5D MARK III								DRAWING NO: FIGURE 18.45		
DIRECTION OF VIEW: BEARING FROM NORTH (0°): 195°			LENS MAKE, MODEL AND FOCAL LENGTH: SIGMA 50MM F1.4 EX DG HSM								DATE: JUNE 2021		
DISTANCE TO SITE: WITHIN SITE			HEIGHT OF CAMERA LENS ABOVE GROUND (MAOD): 1.5M								DRAWN: R.K.		
											SCALE: NTS		



© Copyright 2020 NNB Generation Company (SZC) Limited. No part of this drawing is to be reproduced without prior permission of NNB Generation Company (SZC) Limited.										View flat at a comfortable arm's length									
CAMERA LOCATION (OS GRID REFERENCE): 637179 E 260544 N		HORIZONTAL FIELD OF VIEW: 53.5° (PLANAR PROJECTION)		PHOTO DATE / TIME: 07/03/2019 11:50		THIS VISUALISATION IS BASED UPON LIDAR DIGITAL SURFACE DATA WITH SPOT HEIGHTS AT 2M INTERVALS AND DOES NOT PRECISELY MODEL SMALL SCALE CHANGES IN LANDFORM OR SHARP BREAKS IN SLOPE. NO DIMENSIONS ARE TO BE SCALED FROM THIS DRAWING. ALL DIMENSIONS ARE TO BE CHECKED ON SITE. AREA MEASUREMENTS FOR INDICATIVE PURPOSES ONLY.				  		COPYRIGHT Reproduced from Ordnance Survey map with the permission of Ordnance Survey on behalf of the controller of Her Majesty's Stationery Office © Crown Copyright (2019). All Rights reserved. NNB GenCo 0100060408.		DOCUMENT: SIZEWELL C PROJECT RESPONSES TO EXAMINING AUTHORITY'S WRITTEN QUESTIONS ISSUED 21ST APRIL 2021 CHAPTER 18: LANDSCAPE IMPACT, VISUAL EFFECTS AND DESIGN		DRAWING TITLE: TWO VILLAGE BYPASS REPRESENTATIVE VIEWPOINT 1: PHOTOWIRE		NOT PROTECTIVELY MARKED	
GROUND LEVEL (MAOD): 16M		PAPER SIZE: 841MM X 297MM (HALF A1)		CAMERA MODEL AND SENSOR FORMAT: CANON EOS 5D MARK III										DRAWING NO: FIGURE 18.46					
DIRECTION OF VIEW: BEARING FROM NORTH (0°): 195°		ENLARGEMENT FACTOR: TBC		LENS MAKE, MODEL AND FOCAL LENGTH: SIGMA 50MM F1.4 EX DG HSM										DATE: JUNE 2021		DRAWN: R.K.		SCALE: NTS	
DISTANCE TO SITE: WITHIN SITE		VISUALISATION TYPE: TYPE 3		HEIGHT OF CAMERA LENS ABOVE GROUND (MAOD): 1.5M															



©Copyright 2020 NNB Generation Company (SZC) Limited. No part of this drawing is to be reproduced without prior permission of NNB Generation Company (SZC) Limited.

View flat at a comfortable arm's length

CAMERA LOCATION (OS GRID REFERENCE): 635254 E 259261 N		HORIZONTAL FIELD OF VIEW: 53.5° (PLANAR PROJECTION)		PHOTO DATE / TIME: 04/03/2019 16:40		NO DIMENSIONS ARE TO BE SCALED FROM THIS DRAWING, ALL DIMENSIONS ARE TO BE CHECKED ON SITE. AREA MEASUREMENTS FOR INDICATIVE PURPOSES ONLY.						COPYRIGHT Reproduced from Ordnance Survey map with the permission of Ordnance Survey on behalf of the controller of Her Majesty's Stationery Office © Crown Copyright (2019). All Rights reserved. NNB GenCo 0100060408.		DOCUMENT: SIZEWELL C PROJECT RESPONSES TO EXAMINING AUTHORITY'S WRITTEN QUESTIONS ISSUED 21ST APRIL 2021 CHAPTER 18: LANDSCAPE IMPACT, VISUAL EFFECTS AND DESIGN		DRAWING TITLE: TWO VILLAGE BYPASS REPRESENTATIVE VIEWPOINT 6: EXISTING VIEW		NOT PROTECTIVELY MARKED	
GROUND LEVEL (MAOD): 14M		PAPER SIZE: 841MM X 297MM (HALF A1)		CAMERA MODEL AND SENSOR FORMAT: CANON EOS 5D MARK III														DRAWING NO: FIGURE 18.47	
DIRECTION OF VIEW: BEARING FROM NORTH (0°): 53°		ENLARGEMENT FACTOR: TBC		LENS MAKE, MODEL AND FOCAL LENGTH: SIGMA 50MM F1.4 EX DG HSM														DATE: JUNE 2021	
DISTANCE TO SITE: 315M		VISUALISATION TYPE: TYPE 3		HEIGHT OF CAMERA LENS ABOVE GROUND (MAOD): 1.5M														DRAWN: R.K.	
																		SCALE: NTS	



© Copyright 2020 NNB Generation Company (SZC) Limited. No part of this drawing is to be reproduced without prior permission of NNB Generation Company (SZC) Limited.

View flat at a comfortable arm's length

CAMERA LOCATION (OS GRID REFERENCE): 635552 E 259821 N		HORIZONTAL FIELD OF VIEW: 53.5° (PLANAR PROJECTION)		PHOTO DATE / TIME: 06/03/2019 16:55		<div>NO DIMENSIONS ARE TO BE SCALED FROM THIS DRAWING. ALL DIMENSIONS ARE TO BE CHECKED ON SITE. AREA MEASUREMENTS FOR INDICATIVE PURPOSES ONLY.</div> <div></div> <div></div> <div>COPYRIGHT Reproduced from Ordnance Survey map with the permission of Ordnance Survey on behalf of the controller of Her Majesty's Stationery Office © Crown Copyright (2019). All Rights reserved. NNB GenCo 0100060408.</div>		<div>DOCUMENT: SIZEWELL C PROJECT RESPONSES TO EXAMINING AUTHORITY'S WRITTEN QUESTIONS ISSUED 21ST APRIL 2021 CHAPTER 18: LANDSCAPE IMPACT, VISUAL EFFECTS AND DESIGN</div>		<div>DRAWING TITLE: TWO VILLAGE BYPASS REPRESENTATIVE VIEWPOINT 7: EXISTING VIEW</div>		NOT PROTECTIVELY MARKED		
GROUND LEVEL (MAOD): 11M		PAPER SIZE: 841MM X 297MM (HALF A1)		DRAWING NO: FIGURE 18.49										
DIRECTION OF VIEW: BEARING FROM NORTH (0°): 138°		ENLARGEMENT FACTOR: TBC		DATE: JUNE 2021										
DISTANCE TO SITE: WITHIN SITE		VISUALISATION TYPE: TYPE 3		DRAWN: R.K.										
				SCALE: NTS										



Representative Viewpoint 9: Public footpath E-562/009/0 on the southern edge of Wickham Market

Existing View:

This viewpoint is located close to the highest point of public footpath E-562/009/0, on the south eastern edge of Wickham Market. The footpath has a hedgerow and garden boundary vegetation along the northern edge and occasional short stretches of hedgerow along the southern edge. In the distance, beyond houses on Spring Lane in the middle distance and buildings at Bridge Farm beyond that, lighting columns at the existing roundabout at the junction of the A12 with the B1078 and B1116 are visible. The slip road on to the A12 is also glimpsed beyond Bridge Farm. Further north east along the public footpath, the site becomes screened from view by existing vegetation and buildings as the landform drops down.

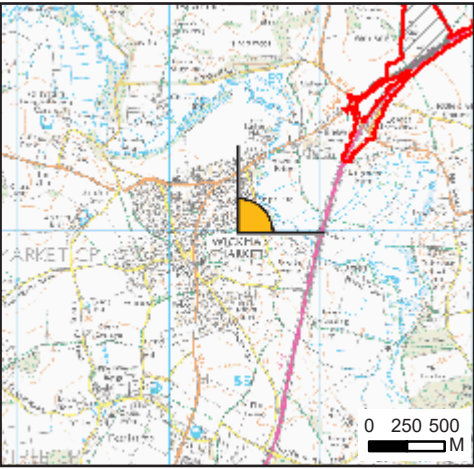
Construction and removal and reinstatement Effects:

The construction of the proposed development would occur in the distance when viewed from this viewpoint. Construction activity along parts of the access road would be visible over existing buildings and vegetation, and construction activity in the south east of the site would also be glimpsed beyond retained vegetation along bridleway E-288/008/0. Effects would be of **Small-negligible** scale and, on balance, **Adverse**.

Operational Effects:

The proposed development, including the access road, would be visible in the distance, over existing buildings and vegetation. The tops of lighting columns and movement of taller vehicles may be visible for a slightly greater extent of the view. Effects would be of **Small-negligible** scale and, on balance, **Adverse**.

© Copyright 2021 NNB Generation Company (SZC) Limited. No part of this drawing is to be reproduced without prior permission of NNB Generation Company (SZC) Limited.



VIEWPOINT INFORMATION

OS REFERENCE:	630443 E 255999 N
EYE LEVEL (AOD):	28.8M
CAMERA:	CANON EOS 6D
LENS:	EF 50MM F/1.8 STM
CAMERA HEIGHT:	1.5M AGL
PHOTO DATE / TIME:	04/05/2021 13:59

NO DIMENSIONS ARE TO BE SCALED FROM THIS DRAWING,
ALL DIMENSIONS ARE TO BE CHECKED ON SITE.
AREA MEASUREMENTS FOR INDICATIVE PURPOSES ONLY.



COPYRIGHT
Reproduced from Ordnance Survey map with the permission of Ordnance Survey
on behalf of the controller of Her Majesty's Stationery Office © Crown Copyright (2021).
All Rights reserved. NNB GenCo 0100060408.

NOT PROTECTIVELY MARKED

DOCUMENT:
SIZEWELL C PROJECT
RESPONSES TO EXAMINING AUTHORITY'S
WRITTEN QUESTIONS ISSUED 21ST APRIL 2021
CHAPTER 18: LANDSCAPE IMPACT, VISUAL
EFFECTS AND DESIGN

DRAWING TITLE:
SOUTHERN PARK AND RIDE
REPRESENTATIVE VIEWPOINT 9:
PHOTOGRAPH PANEL

DRAWING NO:
FIGURE 18.51

DATE:	DRAWN:	SCALE:
JUNE 2021	R.K..	NTS



Representative Viewpoint 10: Public footpath E-430/006/0 south of Wickham Market

Existing View:

This viewpoint is located at the highest point of public footpath E-430/006/0, to the south of Wickham Market, adjacent to Chapel Lane. There are open views from the footpath, although recent tree planting along the western side of the route will begin to interrupt views over time. In the distance, where the landform rises up on the opposite side of the Deben valley, woodland at Whin Belt and Wonder Grove to the south west of the site form part of the horizon. Lighting columns at the existing roundabout at the junction of the A12 with the B1078 and B1116 are visible to the right of buildings at Bridge Farm. further north east along the public footpath, the site becomes screened from view by existing vegetation as the landform drops down.

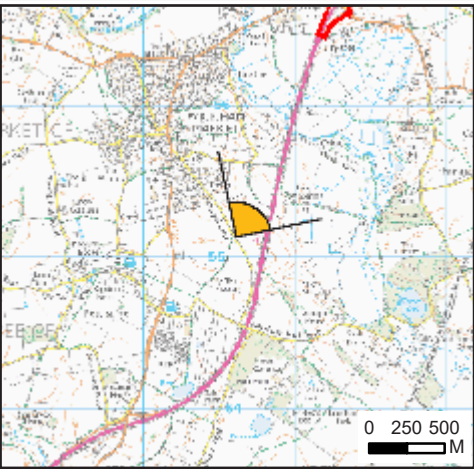
Construction and removal and reinstatement Effects:

The construction of the proposed development would occur on rising ground in the distance when viewed from this viewpoint. Construction activity along parts of the access road would be visible over and between areas of existing vegetation, and construction activity in the south east of the site would also be glimpsed.
Effects would be of **Small-negligible** scale and, on balance, **Adverse**.

Operational Effects:

The proposed development, including sections of the access road, would be glimpsed over and between areas of existing vegetation on the distant rising ground. Lighting columns and movement of taller vehicles may be visible for a slightly greater extent of the view.
Effects would be of **Small-negligible** scale and, on balance, **Adverse**.

© Copyright 2021 NNB Generation Company (SZC) Limited. No part of this drawing is to be reproduced without prior permission of NNB Generation Company (SZC) Limited.



VIEWPOINT INFORMATION

OS REFERENCE:	630596 E 255148 N
EYE LEVEL (AOD):	29.3M
CAMERA:	CANON EOS 6D
LENS:	EF 50MM F/1.8 STM
CAMERA HEIGHT:	1.5M AGL
PHOTO DATE / TIME:	04/05/2021 15:32

NO DIMENSIONS ARE TO BE SCALED FROM THIS DRAWING,
ALL DIMENSIONS ARE TO BE CHECKED ON SITE.
AREA MEASUREMENTS FOR INDICATIVE PURPOSES ONLY.



COPYRIGHT
Reproduced from Ordnance Survey map with the permission of Ordnance Survey
on behalf of the controller of Her Majesty's Stationery Office © Crown Copyright (2021).
All Rights reserved. NNB GenCo 0100060408.

NOT PROTECTIVELY MARKED

DOCUMENT:
SIZEWELL C PROJECT
RESPONSES TO EXAMINING AUTHORITY'S
WRITTEN QUESTIONS ISSUED 21ST APRIL 2021
CHAPTER 18: LANDSCAPE IMPACT, VISUAL
EFFECTS AND DESIGN

DRAWING TITLE:
SOUTHERN PARK AND RIDE
REPRESENTATIVE VIEWPOINT 10:
PHOTOGRAPH PANEL

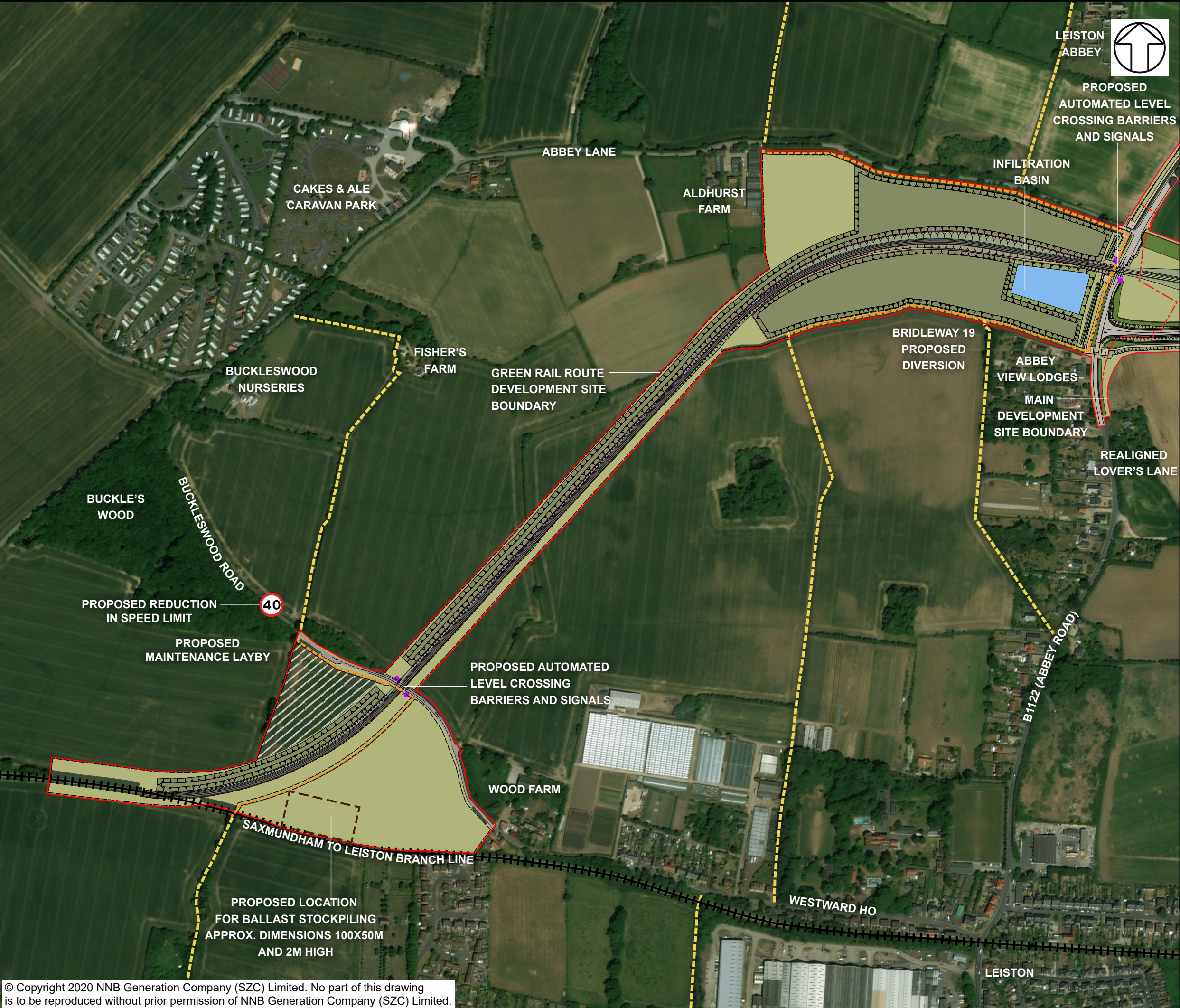
DRAWING NO: FIGURE 18.52	DATE: JUNE 2021	DRAWN: R.K..	SCALE: NTS
-----------------------------	--------------------	-----------------	---------------



© Copyright 2020 NNB Generation Company (SZC) Limited. No part of this drawing is to be reproduced without prior permission of NNB Generation Company (SZC) Limited.

View flat at a comfortable arm's length

CAMERA LOCATION (OS GRID REFERENCE): 644012 E 263990 N		HORIZONTAL FIELD OF VIEW: 53.5° (PLANAR PROJECTION)		PHOTO DATE / TIME: 28/02/2019 14:00		NO DIMENSIONS ARE TO BE SCALED FROM THIS DRAWING, ALL DIMENSIONS ARE TO BE CHECKED ON SITE. AREA MEASUREMENTS FOR INDICATIVE PURPOSES ONLY.				COPYRIGHT Reproduced from Ordnance Survey map with the permission of Ordnance Survey on behalf of the controller of Her Majesty's Stationery Office © Crown Copyright (2019). All Rights reserved. NNB GenCo 0100060408.	DOCUMENT: SIZEWELL C PROJECT RESPONSES TO EXAMINING AUTHORITY'S WRITTEN QUESTIONS ISSUED 21ST APRIL 2021 CHAPTER 18: LANDSCAPE IMPACT, VISUAL EFFECTS AND DESIGN	DRAWING TITLE: GREEN RAIL ROUTE REPRESENTATIVE VIEWPOINT 5: EXISTING VIEW	NOT PROTECTIVELY MARKED		
GROUND LEVEL (MAOD): 19M		PAPER SIZE: 841MM X 297MM (HALF A1)		CAMERA MODEL AND SENSOR FORMAT: CANON EOS 5D MARK III									DRAWING NO: FIGURE 18.53		
DIRECTION OF VIEW: BEARING FROM NORTH (0°): 130°		ENLARGEMENT FACTOR: TBC		LENS MAKE, MODEL AND FOCAL LENGTH: SIGMA 50MM F1.4 EX DG HSM									DATE: JUNE 2021		
DISTANCE TO SITE: 0M		VISUALISATION TYPE: TYPE 3		HEIGHT OF CAMERA LENS ABOVE GROUND (MAOD): 1.5M									DRAWN: R.K.		
													SCALE: NTS		



NOTES

KEY

- DEVELOPMENT SITE BOUNDARY
- VOLUME 9 ASSESSMENT AREA
- GREEN RAIL ROUTE
- PROPOSED BOUNDARY FENCE
- ECOLOGICAL FENCE
- TEMPORARY CONSTRUCTION COMPOUND
- PEDESTRIAN SURFACING
- LIGHTING COLUMNS
- LANDSCAPE BUNDS
- GRASSED EMBANKMENTS/CUTTINGS
- PROPOSED PLANTING
- EXISTING VEGETATION
- GRASSED AREAS
- INFILTRATION BASIN
- SWALE
- EXISTING PUBLIC RIGHT OF WAY
- PROPOSED DIVERTED PUBLIC RIGHT OF WAY
- PROPOSED LOCATION FOR BALLAST STOCKPILING

NOT PROTECTIVELY MARKED

COPYRIGHT
Reproduced from Ordnance Survey map with the permission of Ordnance Survey on behalf of the controller of Her Majesty's Stationery Office © Crown Copyright (2019). All Rights reserved. NNB GenCo 0100060408.
Esri, DigitalGlobe, GeoEye, Earthstar Geographics, CNES/Airbus DS, USDA, USGS, AeroGRID, IGN, and the GIS User Community.
PROW data sourced from Suffolk CC on 27/02/2019 under OGL v3.0 are an interpretation of the Definitive Map and Statement, not the Definitive Map itself, and should not be relied on for determining the position or alignment of any public right of way. The data contains Ordnance Survey data © Crown copyright and database right 2019.



DOCUMENT:
SIZEWELL C PROJECT
RESPONSES TO EXAMINING AUTHORITY'S
WRITTEN QUESTIONS ISSUED 21ST APRIL 2021
CHAPTER 18: LANDSCAPE IMPACT, VISUAL
EFFECTS AND DESIGN

DRAWING TITLE:
GREEN RAIL ROUTE
PROPOSED LOCATION FOR BALLAST
STOCKPILING

DRAWING NO:
FIGURE 18.55

DATE: JUNE 2021 **DRAWN:** V.W. **SCALE:** 1:5,000 @A3

